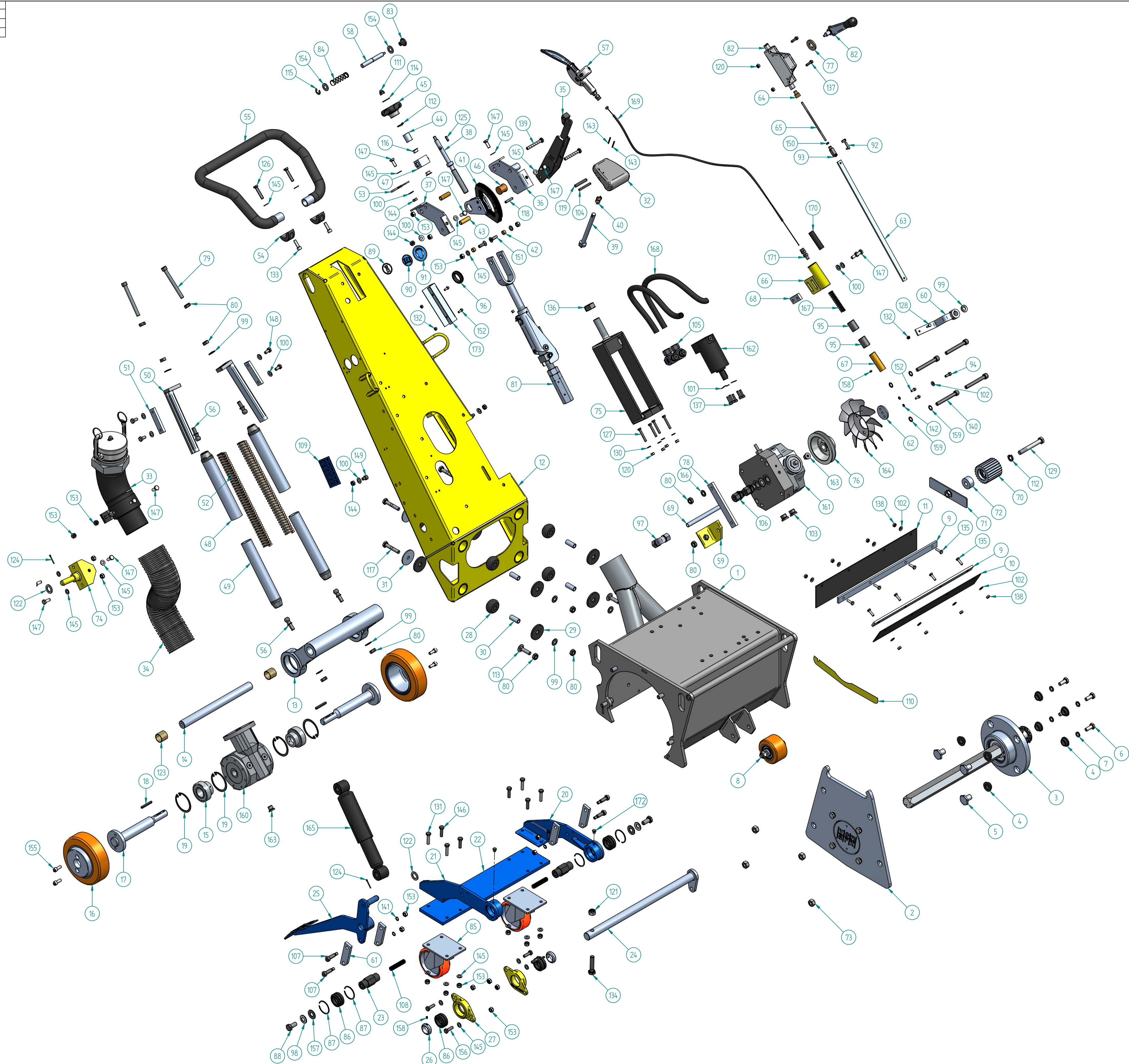


TOLERANCES acc. to ISO / TR 15001 unless otherwise indicated.  
 Abweichungen nach ISO / TR 15001, es sei denn anders angegeben.  
 Dimensionen sind in mm anzugeben.  
 Toleranzen sind in mm anzugeben.  
 Abweichungen nach ISO / TR 15001, es sei denn anders angegeben.  
 Dimensionen sind in mm anzugeben.



THE INFORMATION CONTAINED IN THIS DRAWING IS THE SOLE PROPERTY OF VON ARX. EOOD REPRODUCTION IN PART OR WHOLE WITHOUT THE WRITTEN PERMISSION OF VON ARX EOOD IS PROHIBITED.

Material		Dimension	
Drawn By GS	Date 12/09/2018	Approved Date 16/03/2021	Approved By MS
Units : mm		SIZE A1	
		Description VA-30SH BASIC DEVICE	Article Number 707230
		DWG NO 668.00.00f	
Part/Assembly File 6680000.asm		Sheet 1	of 2
		Rev. f	

Table with 2 columns: TOLERANCES acc. to ISO / TOLERANSEER entl. ISO. Rows contain tolerance information for applicable parts, surface finish, and surface roughness.

Main parts list table with columns: Item, Artikelnummer, Document Number, Title, Quantity, Item, Artikelnummer, Document Number, Title, Quantity, Item, Artikelnummer, Document Number, Title, Quantity. Contains 185 rows of parts including screws, nuts, washers, springs, and various mechanical components.

ALL INFORMATION CONTAINED IN THIS DRAWING IS THE SOLE PROPERTY OF VON ARX EOOD. REPRODUCTION IN PART OR WHOLE WITHOUT THE WRITTEN PERMISSION OF VON ARX EOOD IS PROHIBITED.

Revision table with columns: Rev. No, Revision description, Date, Sign. Shows revisions e and f.

Technical drawing header including: Drawn By (GS), Date (12/09/2018), Approved Date (16/03/2021), Approved By (MS), Material, Dimension, Units (mm), SIZE (A2), Von Arx logo, Description (VA-30SH BASIC DEVICE), Article Number (707230), DWG NO (668.00.00f), Part/Assembly File (6680000.asm), sheet 2 of 2, and Rev. f.