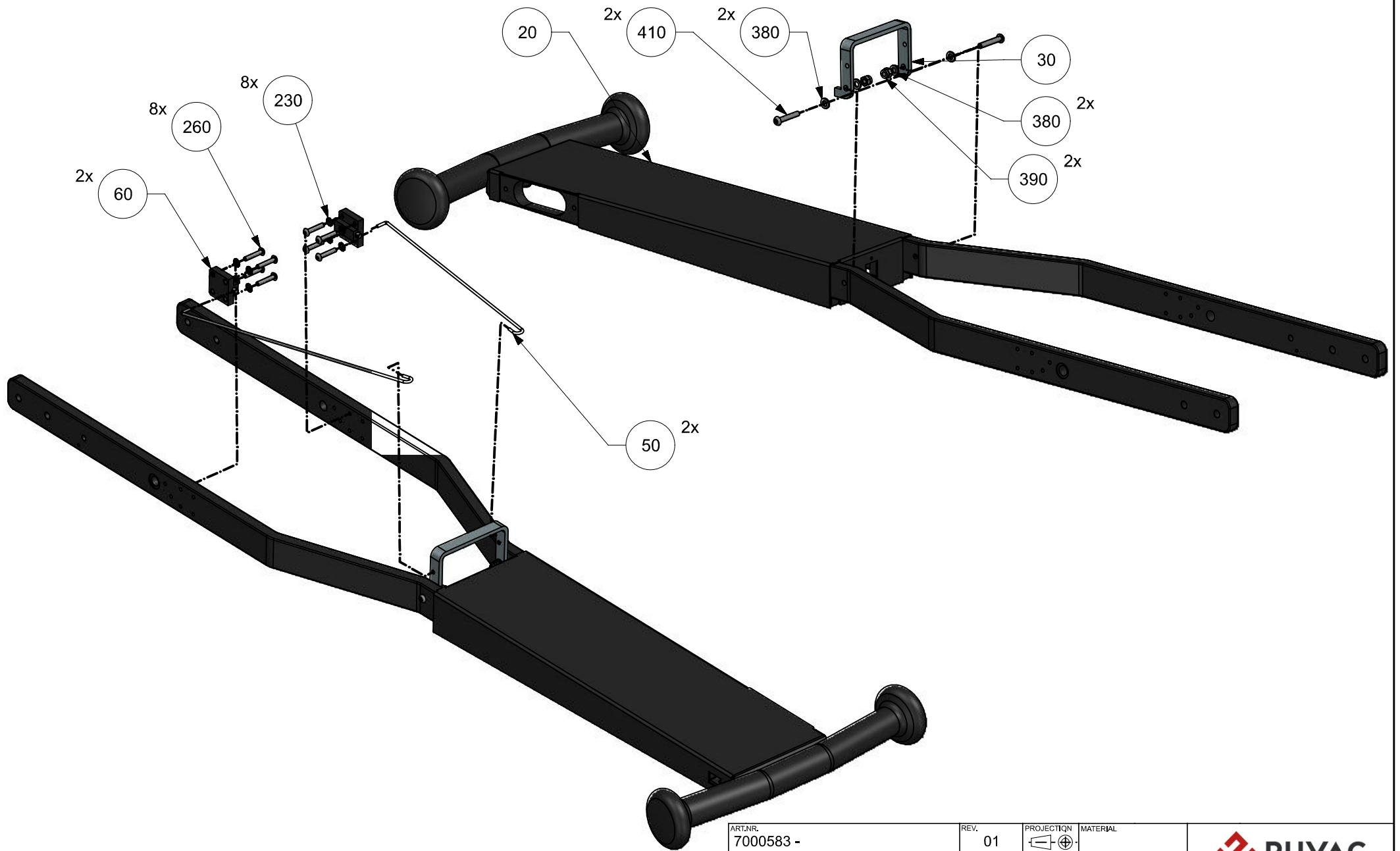



520	A7001441/00	COVER FRONT ASSY	COVER FRONT ASSY	-	1
510	A7001435/00	ASSEMBLY	CABLE ASSEMBLY 230V EU	-	1
490	P7001448/02	HANDLEBAR	SIMPLE	-	1
480	S105146/00	DIN_127_A,2,8.8	Spring Lock Washers, Form A DIN 127,2,8.8	NX Standard Part	2
470	S108636/00	DIN_4762,M8x20,8.8	Hexagon Socket Head Cap Screw, DIN EN ISO 4762 (ISO 4762-2004),M8x20,8.8	NX Standard Part	2
500	S104102/00	ISO_7089,8.8.8	Plain Washer, Normal Series, DIN EN ISO 7089-2000,8.8,8	NX Standard Part	2
450	P7001381/00	CABLE SET COVER	G4 TOP	-	1
440	P7001320/01	PLATE	COVER PLUG	-	1
410	S118875/00	DIN_7380,M6x35,8.8	Hexagon Socket Button Head Screw, DIN EN ISO 7380-2004,M6x35,8.8	NX Standard Part	2
390	S106885/00	DIN_982,M6,8.8	Prevailing Torque Type Hexagon Nut, DIN 982-1987,M6,8.8	NX Standard Part	2
380	S103982/00	DIN_7091,6,8.8	Plain Washer, DIN 125 (ISO 7091-2000),6,8.8	NX Standard Part	4
350	S106384/00	DIN_934,M3x0.5,8.8	Hexagon Nut, DIN 934 1987,M3x0.5,8.8	NX Standard Part	2
340	S108540/00	DIN_4762,M5x10,8.8	Hexagon Socket Head Cap Screw, DIN EN ISO 4762 (ISO 4762-2004),M5x10,8.8	NX Standard Part	2
330	S108484/00	DIN_4762,M3x20,8.8	Hexagon Socket Head Cap Screw, DIN EN ISO 4762 (ISO 4762-2004),M3x20,8.8	NX Standard Part	2
320	S108564/00	DIN_4762,M5x35,8.8	Hexagon Socket Head Cap Screw, DIN EN ISO 4762 (ISO 4762-2004),M5x35,8.8	NX Standard Part	2
310	S108596/00	DIN_4762,M6x25,8.8	Hexagon Socket Head Cap Screw, DIN EN ISO 4762 (ISO 4762-2004),M6x25,8.8	NX Standard Part	1
300	S012401/00	ISO_7089,10	Plain Washer, Normal Series, DIN 125-A,10	NX Standard Part	1
290	S008925/00	DIN_2093,A,1-20x1_1,4.8	Disc Spring, Type A, DIN 2093-1992,1-20x1_1,4.8	NX Standard Part	1
280	S009903/00	DIN_7046-1,D,M5x20,4.8	Cross Recessed Countersunk Flat Head Screw, Type Z, Full Thread Type, DIN EN ISO 7046-1 (ISO 7046-1-1994),M5x20,4.8	NX Standard Part	4
270	S113671/00	DIN_7380,M6x12,10.9	Hexagon Socket Button Head Screw, DIN EN ISO 7380-2004,M6x12,10.9	NX Standard Part	14
260	S113659/00	DIN_7380,M5x25,10.9	Hexagon Socket Button Head Screw, DIN EN ISO 7380-2004,M5x25,10.9	NX Standard Part	8
250	S012384/00	DIN_6798_A,6	SERRATED LOCK WASHER, DIN 6798 A, 6	-	14
240	S012382/00	DIN_6798_A,4	SERRATED LOCK WASHER, DIN 6798 A, 4	-	2
230	S012383/00	DIN_6798_A,5	SERRATED LOCK WASHER, DIN 6798 A, 5	-	10
210	S011665/00	DIN_7379,10x16,4.8	Screw, Hex Socket Shoulder, ISO 7379-1983,10x16,4.8	NX Standard Part	1
190	P7000564/00	SPRING	MOTOR	-	1
180	P7000575/01	MOTOR LEVER	FRAME	-	1
160	P7000530/02	STARTING	LEVER	-	1
150	P7000577/01	ADAPTER	HOSE Y	-	1
140	R7500084/00	HOUSING	HC-STA-D07-BWS-EL-AL	PHOENIX CONTACT NR. 1419249	1
120	R7500086/00	CONTACT INSERT	HC-A04-I-UT-F	PHOENIX CONTACT NR. 1585249	1
110	R7500078/00	LIMIT SWITCH	A HEAD	SCHNEIDER NR.XCKN2110P20	1
100	R7500075/00	CONTACTOR	220-230V TESYS	SCHNEIDER NR. LC1K09 10M7	1
90	R7500077/00	TUBE CLAMP	D50 PLASTIC	-	2
60	A7000584/01	PLATE	LEVER	-	2
50	P7000531/00	ROD	LEVER	-	2
30	P7000526/01	PLATE	HANDLE	-	1
20	P7000567/02	FRAME	JLM G4	-	1
10	P7000551/01	PLATE	ELECTRO ADAPTER	BASE ITEM: 7500251	1
NO.	TITLE	NAME	DESCRIPTION	NOTES	QTY

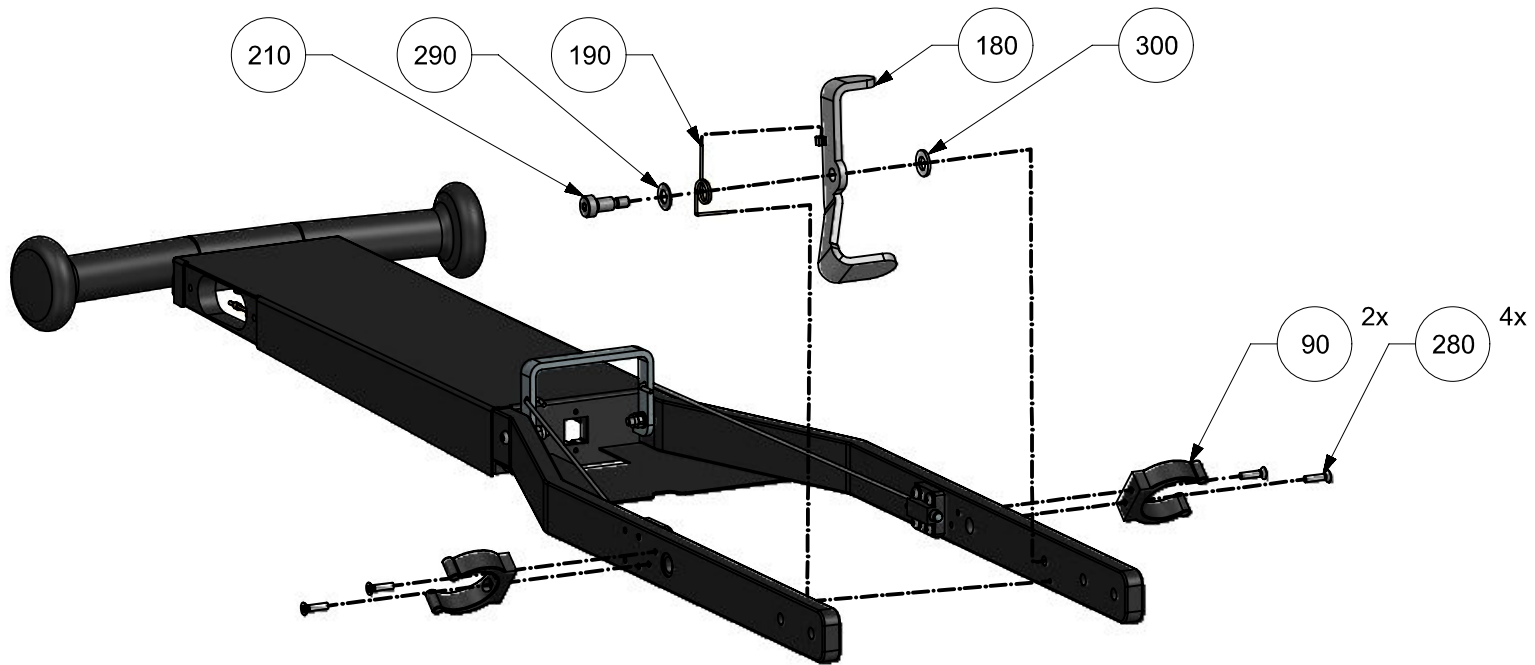
ART.NR. 7000583 -		REV. 01	PROJECTION 	MATERIAL			
TITLE MAIN FRAME - JLM G4				FINISH -			
NOTES: -					DESIGNER	PALLAG DESIGN	PROJECT
5	Changed: R7500117 to P7001406	05.10.2023	pd3	DATE	P2209 -		
6	Revised: P7000551, P7000577	11.12.2023	pd3	LAST CHANGE	PALLAG DESIGN	UNLESS OTHERWISE SPECIFIED: DIMENSIONS ARE IN MILLIMETERS, FOR UNDEFINED MACHINING TOLERANCES USE ISO 2768-MK, FOR WELDING SS-EN ISO 13920-BF, MACHINED SURFACE FINISH ACCORDING TO ISO 1302, FOR UNDEFINED GEOMETRY SEE 3D MODEL.	
3	Changed: 7000567; 7000527; 7000530	21.06.2023	pd2	DATE	05-May-2024		
4	Added: P7001381, P7001378	31.08.2023	pd3	STATUS			
NO.	CHANGE	DATE	DESIGNER	SHEET 1 / 8	SIZE: A3		

THE INFORMATION CONTAINED IN THIS DRAWING IS THE SOLE PROPERTY OF PUVAC HUNGARY KFT. REPRODUCTION IN PART OR WHOLE WITHOUT THE WRITTEN PERMISSION OF PUVAC HUNGARY KFT. PROHIBITED.



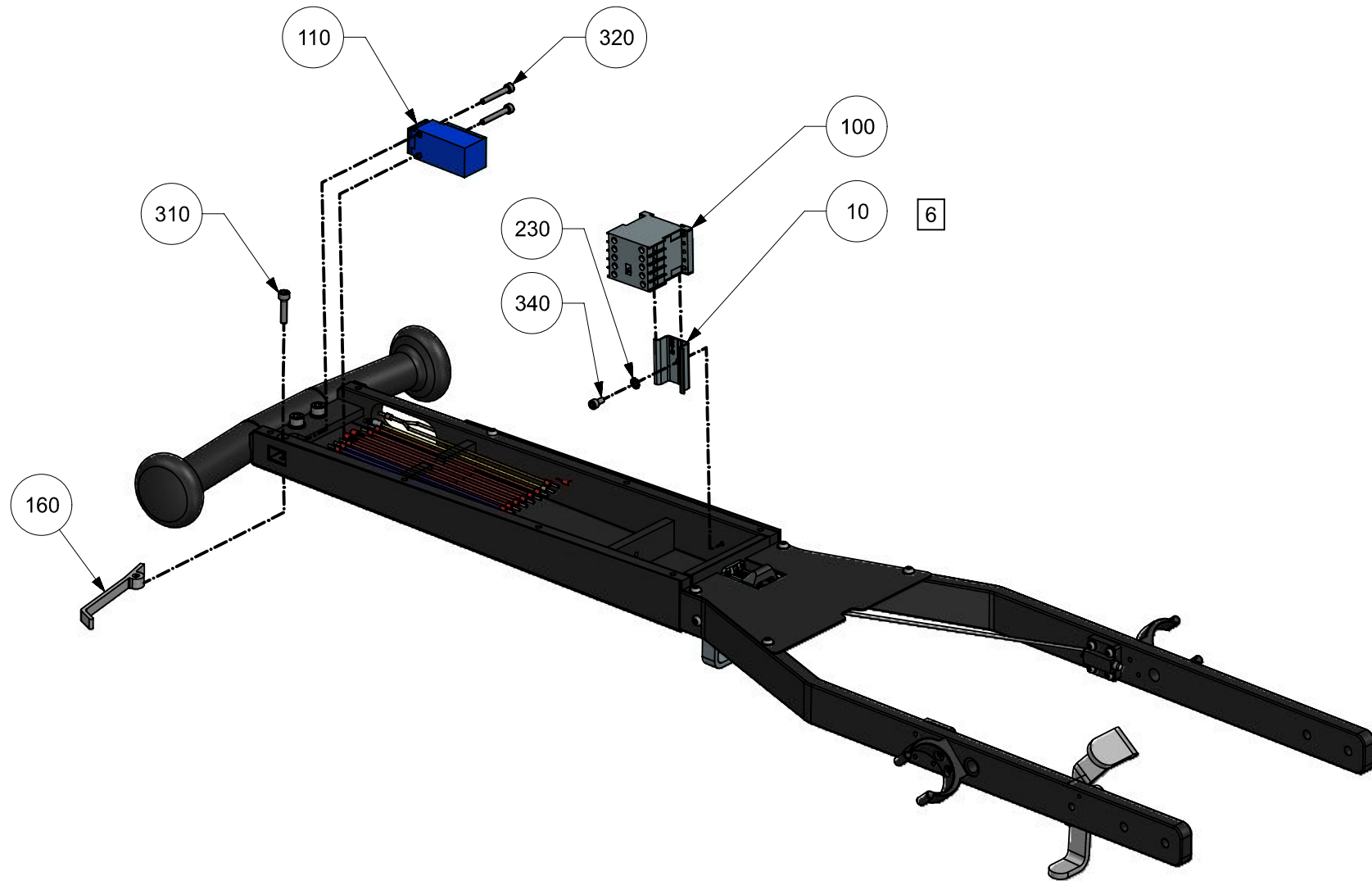
THE INFORMATION CONTAINED
IN THIS DRAWING IS THE SOLE
PROPERTY OF PUVAC HUNGARY KFT.
REPRODUCTION IN PART OR WHOLE
WITHOUT THE WRITTEN PERMISSION
OF PUVAC HUNGARY KFT. PROHIBITED.

ART.NR. 7000583 -	REV. 01	PROJECTION ⊕	MATERIAL -		
TITLE MAIN FRAME - JLM G4			FINISH -		
NOTES: -			DESIGNER	PALLAG DESIGN	PROJECT
			DATE		P2209 -
			LAST CHANGE	PALLAG DESIGN	UNLESS OTHERWISE SPECIFIED: DIMENSIONS ARE IN MILLIMETERS, FOR UNDEFINED MACHINING TOLERANCES USE ISO 2768-MK, FOR WELDING SS-EN ISO 13920-BF, MACHINED SURFACE FINISH ACCORDING TO ISO 1302, FOR UNDEFINED GEOMETRY SEE 3D MODEL.
			DATE	05-May-2024	
			STATUS		
NO.	CHANGE	DATE	DESIGNER	SHEET 2 / 8	SIZE: A3



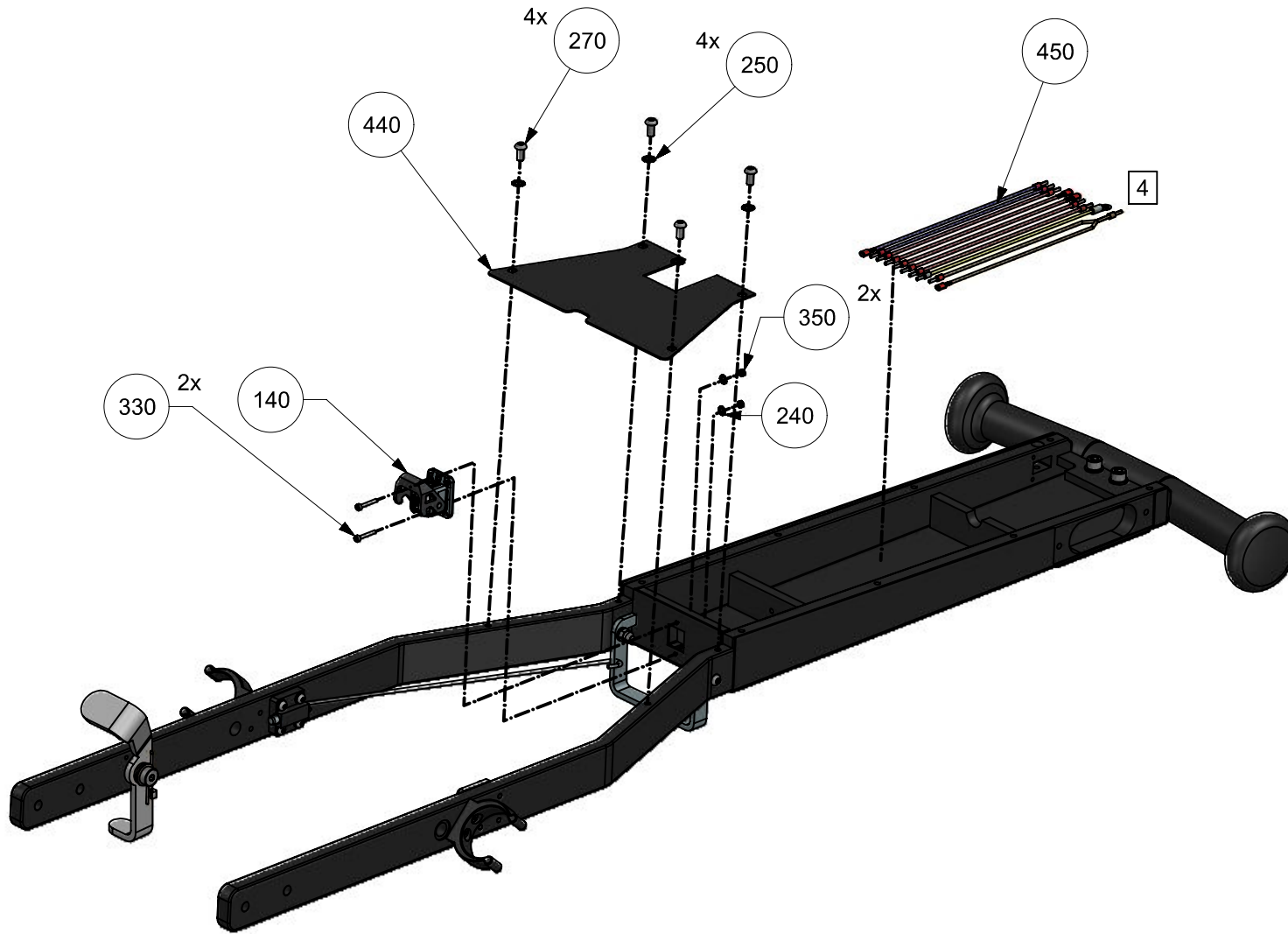
THE INFORMATION CONTAINED
IN THIS DRAWING IS THE SOLE
PROPERTY OF PUVAC HUNGARY KFT.
REPRODUCTION IN PART OR WHOLE
WITHOUT THE WRITTEN PERMISSION
OF PUVAC HUNGARY KFT. PROHIBITED.

ART.NR. 7000583 -	REV. 01	PROJECTION 	MATERIAL		
TITLE MAIN FRAME - JLM G4			FINISH -		
NOTES: -			DESIGNER	PALLAG DESIGN	PROJECT
			DATE		P2209 -
			LAST CHANGE	PALLAG DESIGN	UNLESS OTHERWISE SPECIFIED: DIMENSIONS ARE IN MILLIMETERS, FOR UNDEFINED MACHINING TOLERANCES USE ISO 2768-MK, FOR WELDING SS-EN ISO 13920-BF, MACHINED SURFACE FINISH ACCORDING TO ISO 1302, FOR UNDEFINED GEOMETRY SEE 3D MODEL.
			DATE	05-May-2024	
			STATUS		
NO.	CHANGE	DATE	DESIGNER	SHEET 3 / 8	SIZE: A3



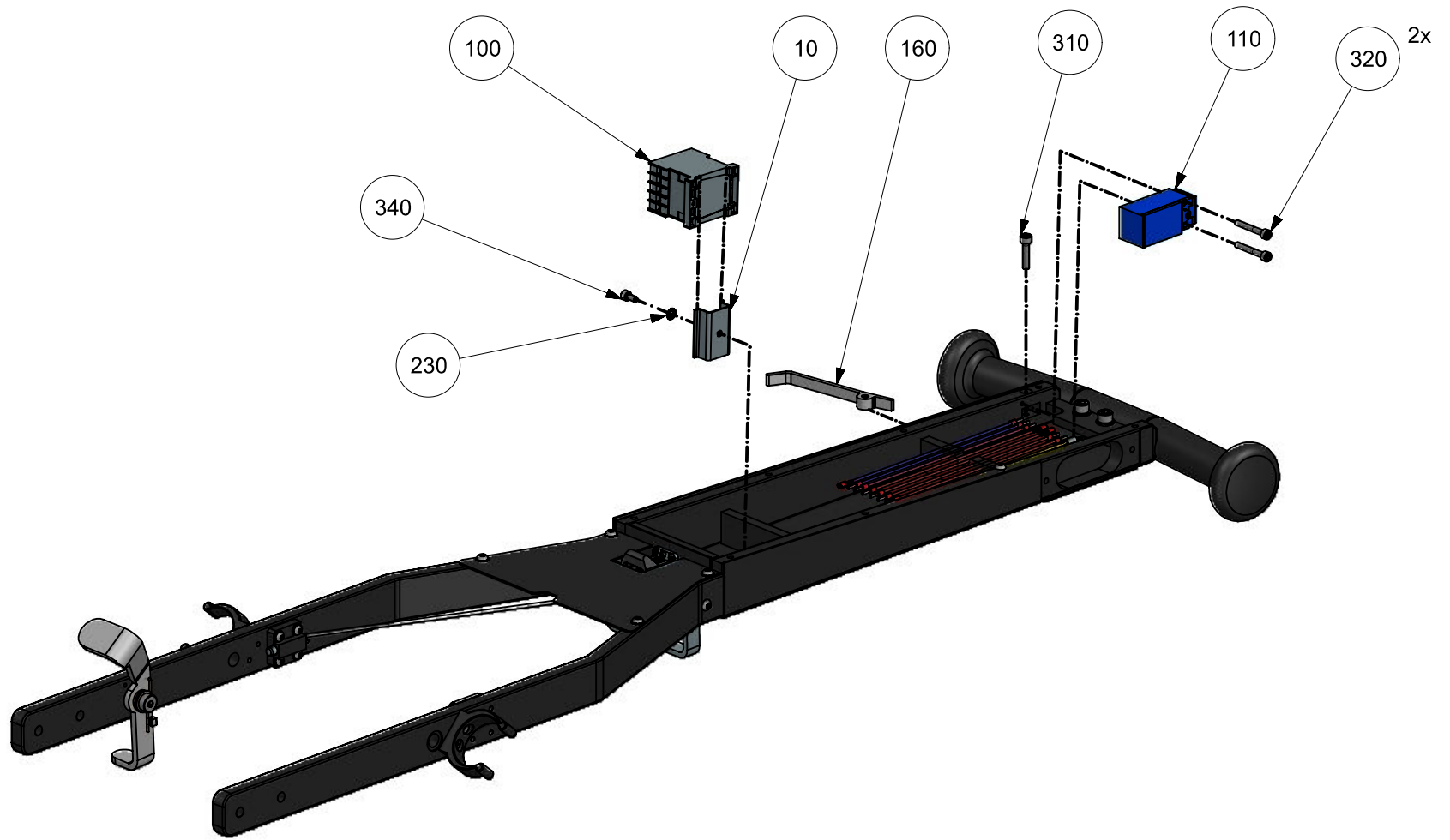
THE INFORMATION CONTAINED
IN THIS DRAWING IS THE SOLE
PROPERTY OF PUVAC HUNGARY KFT.
REPRODUCTION IN PART OR WHOLE
WITHOUT THE WRITTEN PERMISSION
OF PUVAC HUNGARY KFT. PROHIBITED.

ART.NR. 7000583 -	REV. 01	PROJECTION 	MATERIAL		
TITLE MAIN FRAME - JLM G4			FINISH -		
NOTES: -			DESIGNER	PALLAG DESIGN	PROJECT
			DATE		P2209 -
			LAST CHANGE	PALLAG DESIGN	UNLESS OTHERWISE SPECIFIED: DIMENSIONS ARE IN MILLIMETERS, FOR UNDEFINED MACHINING TOLERANCES USE ISO 2768-MK, FOR WELDING SS-EN ISO 13920-BF, MACHINED SURFACE FINISH ACCORDING TO ISO 1302, FOR UNDEFINED GEOMETRY SEE 3D MODEL.
			DATE	05-May-2024	
			STATUS		
NO.	CHANGE	DATE	DESIGNER	SHEET 4 / 8	SIZE: A3



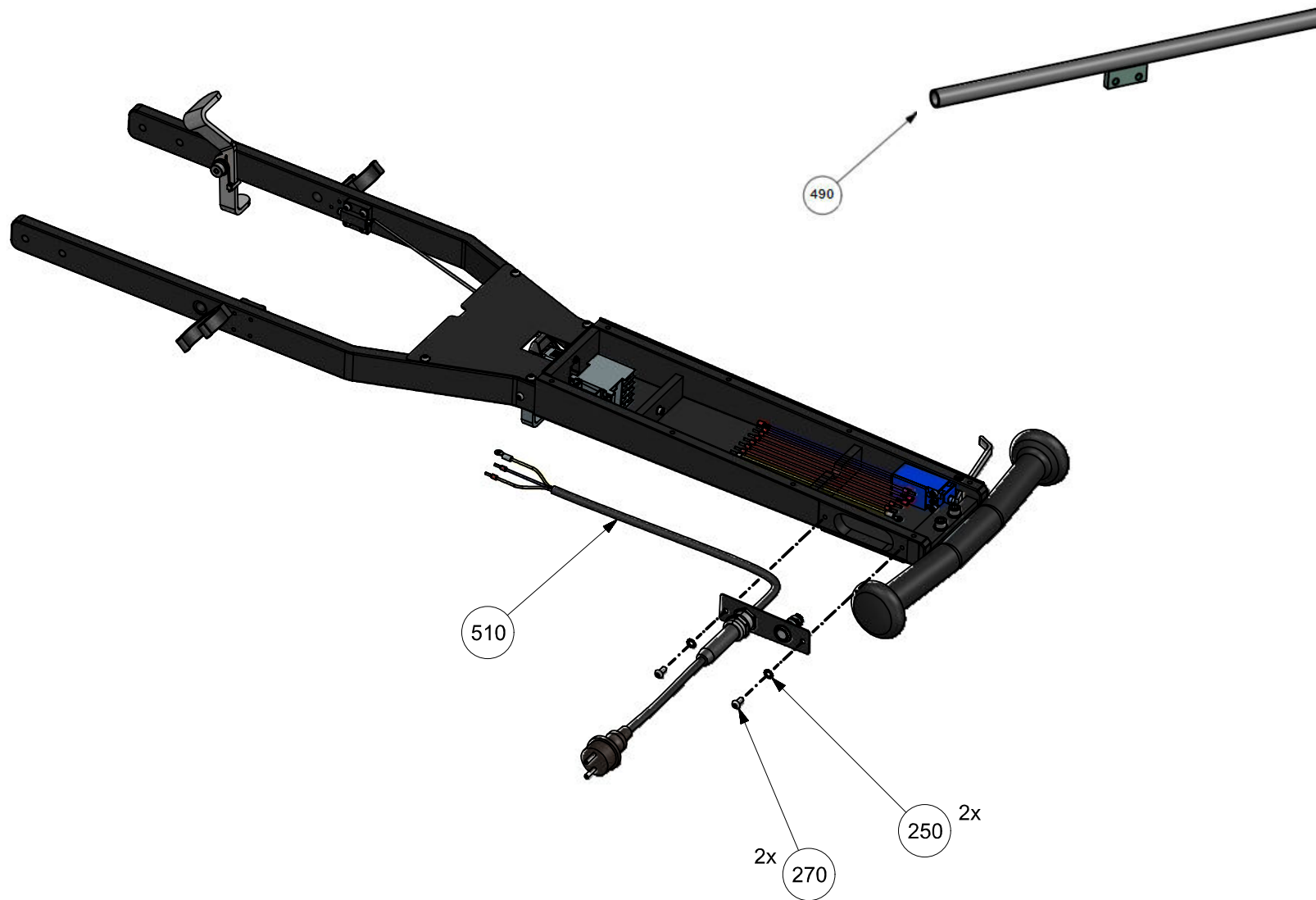
THE INFORMATION CONTAINED
 IN THIS DRAWING IS THE SOLE
 PROPERTY OF PUVAC HUNGARY KFT.
 REPRODUCTION IN PART OR WHOLE
 WITHOUT THE WRITTEN PERMISSION
 OF PUVAC HUNGARY KFT. PROHIBITED.

ART.NR. 7000583 -	REV. 01	PROJECTION 	MATERIAL -		
TITLE MAIN FRAME - JLM G4			FINISH -		
NOTES: -			DESIGNER	PALLAG DESIGN	PROJECT
			DATE		P2209 -
			LAST CHANGE	PALLAG DESIGN	UNLESS OTHERWISE SPECIFIED: DIMENSIONS ARE IN MILLIMETERS, FOR UNDEFINED MACHINING TOLERANCES USE ISO 2768-MK, FOR WELDING SS-EN ISO 13920-BF, MACHINED SURFACE FINISH ACCORDING TO ISO 1302, FOR UNDEFINED GEOMETRY SEE 3D MODEL.
			DATE	05-May-2024	
			STATUS		
NO.	CHANGE	DATE	DESIGNER	SHEET 5 / 8	SIZE: A3




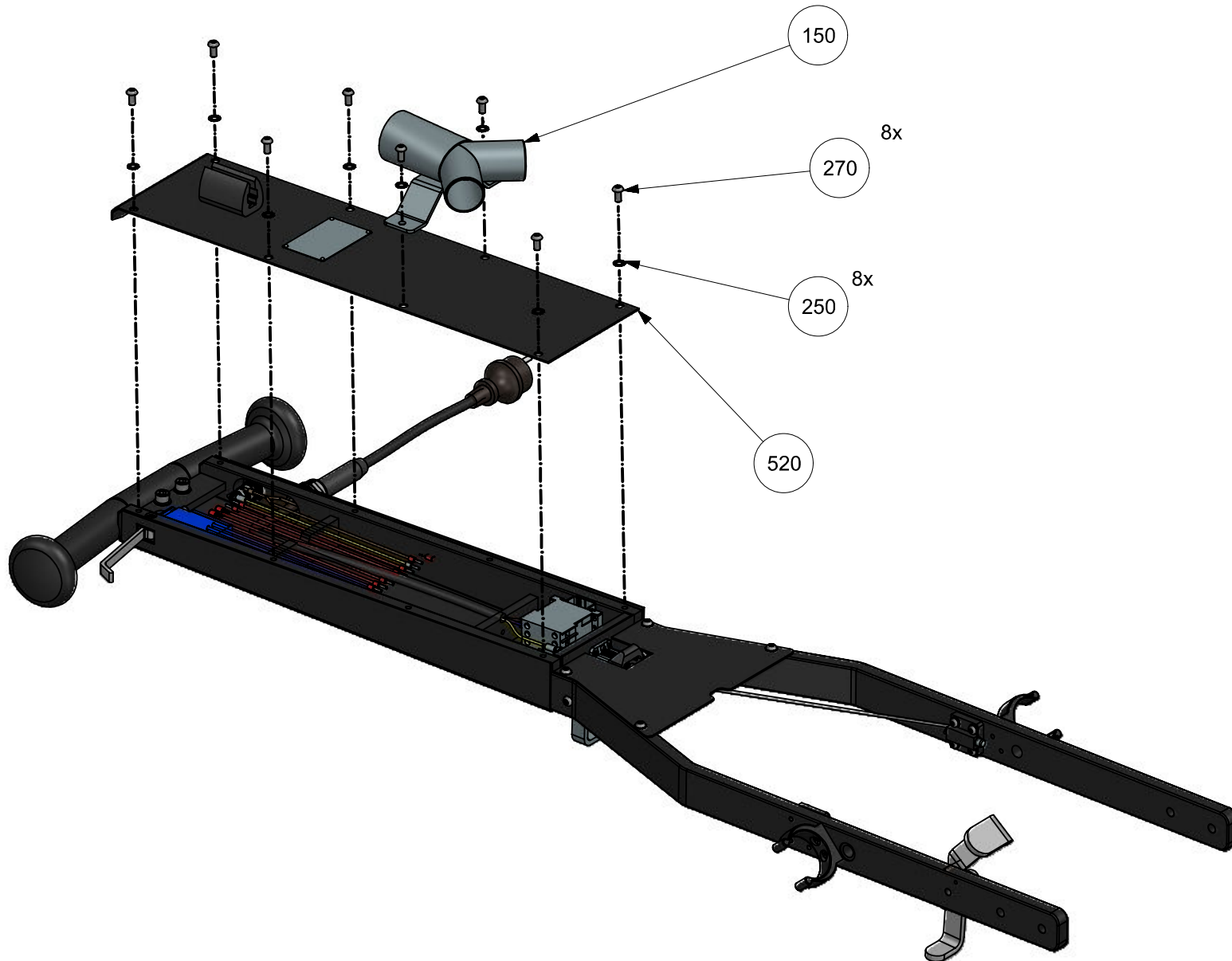
THE INFORMATION CONTAINED
 IN THIS DRAWING IS THE SOLE
 PROPERTY OF PUVAC HUNGARY KFT.
 REPRODUCTION IN PART OR WHOLE
 WITHOUT THE WRITTEN PERMISSION
 OF PUVAC HUNGARY KFT. PROHIBITED.

ART.NR. 7000583 -	REV. 01	PROJECTION 	MATERIAL -		
TITLE MAIN FRAME - JLM G4			FINISH -		
NOTES: -			DESIGNER	PALLAG DESIGN	PROJECT
			DATE		P2209 -
			LAST CHANGE	PALLAG DESIGN	UNLESS OTHERWISE SPECIFIED: DIMENSIONS ARE IN MILLIMETERS, FOR UNDEFINED MACHINING TOLERANCES USE ISO 2768-MK, FOR WELDING SS-EN ISO 13920-BF, MACHINED SURFACE FINISH ACCORDING TO ISO 1302, FOR UNDEFINED GEOMETRY SEE 3D MODEL.
			DATE	05-May-2024	
			STATUS		
NO.	CHANGE	DATE	DESIGNER	SHEET 6 / 8	SIZE: A3




THE INFORMATION CONTAINED
IN THIS DRAWING IS THE SOLE
PROPERTY OF PUVAC HUNGARY KFT.
REPRODUCTION IN PART OR WHOLE
WITHOUT THE WRITTEN PERMISSION
OF PUVAC HUNGARY KFT. PROHIBITED.

ART.NR. 7000583 -	REV. 01	PROJECTION ⊕	MATERIAL	
TITLE MAIN FRAME - JLM G4			FINISH -	
NOTES: -			DESIGNER	PALLAG DESIGN
			DATE	PROJECT P2209 -
			LAST CHANGE	PALLAG DESIGN
			DATE	05-May-2024
			STATUS	UNLESS OTHERWISE SPECIFIED: DIMENSIONS ARE IN MILLIMETERS, FOR UNDEFINED MACHINING TOLERANCES USE ISO 2768-MK, FOR WELDING SS-EN ISO 13920-BF, MACHINED SURFACE FINISH ACCORDING TO ISO 1302, FOR UNDEFINED GEOMETRY SEE 3D MODEL.
NO.	CHANGE	DATE	DESIGNER	SHEET 7 / 8
				SIZE: A3



THE INFORMATION CONTAINED
IN THIS DRAWING IS THE SOLE
PROPERTY OF PUVAC HUNGARY KFT.
REPRODUCTION IN PART OR WHOLE
WITHOUT THE WRITTEN PERMISSION
OF PUVAC HUNGARY KFT. PROHIBITED.

ART.NR. 7000583 -	REV. 01	PROJECTION ⊕	MATERIAL	
TITLE MAIN FRAME - JLM G4			FINISH -	
NOTES: -			DESIGNER	PALLAG DESIGN
			DATE	P2209-JLM - Floor Grinder
			LAST CHANGE	PALLAG DESIGN
			DATE	05-May-2024
			STATUS	
NO.	CHANGE	DATE	DESIGNER	SHEET 8 / 8
				PROJECT UNLESS OTHERWISE SPECIFIED: DIMENSIONS ARE IN MILLIMETERS, FOR UNDEFINED MACHINING TOLERANCES USE ISO 2768-MK, FOR WELDING SS-EN ISO 13920-BF, MACHINED SURFACE FINISH ACCORDING TO ISO 1302, FOR UNDEFINED GEOMETRY SEE 3D MODEL.
				SIZE: A3